

INNOVATION LEADS TO VALUE



SUNWARD

SWE400F

Overall weight:38.8-39.2t

Engine power:252kW/1800rpm

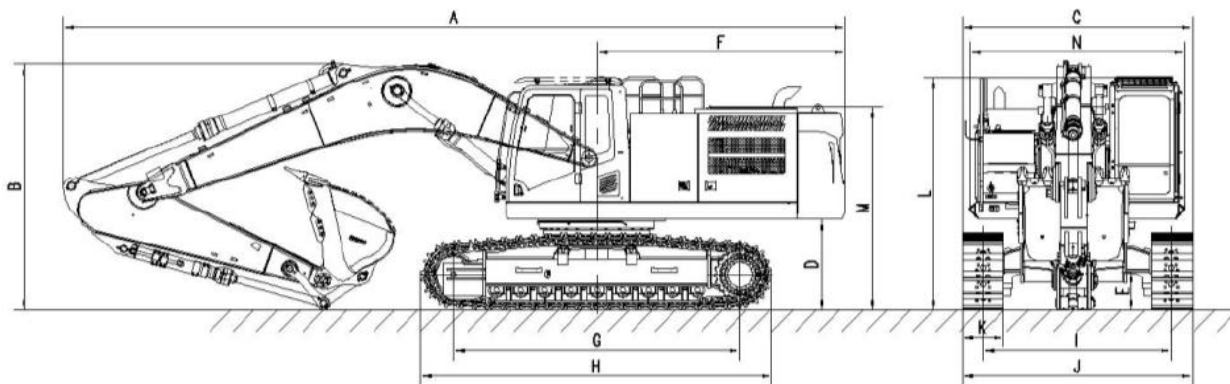
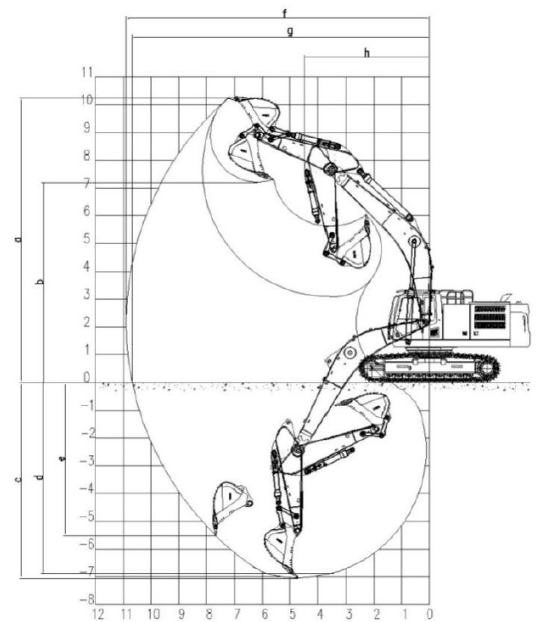
Bucket capacity:2.0-2.4m³





| Host performance parameters | | |
|--------------------------------|----------------|---------------------------|
| Specification | | |
| Operation weight | t | 38.8-39.2 |
| Bucket capacity | m ³ | 2.0-2.4 |
| Engine | | |
| Brand | | Commins |
| Model | | L9S5-C338 |
| Type | | High-pressure common rail |
| Power | kW/rpm | 252/1800 |
| Max. torque | N·m/rpm | 1526/140 |
| Displacement | L | 8.9 |
| Hydraulic system | | |
| Main pump type | | 2X variable piston pump |
| Max. flow of the main pump | L/min | 2X324 |
| System pressure | MPa | 31.4/34.3 |
| Pilot pump type | | 1X gear pump |
| Maximum flow of the pilot pump | L/min | 28.8 |
| Pilot pump pressure | MPa | 3.9 |
| Performance | | |
| Swing speed | rpm | 9.0 |
| Travel speed | km/h | 5.6/3.3 |
| Climbing capacity | ° | 35 |
| Track width | mm | 600 |
| Pressure to the ground | kPa | 69.6 |
| Tank Volume | | |
| Fuel tank | L | 700 |
| Hydraulic oil tank | L | 475 |

| Working range, digging force | | | |
|------------------------------|---|----|-------|
| a | Max. digging height | mm | 10375 |
| b | Max. unloading height | mm | 7175 |
| c | Max. digging depth | mm | 7020 |
| d | Digging depth at 8 feet level | mm | 6855 |
| e | Max. vertical digging depth | mm | 5500 |
| f | Max. digging radius | mm | 10921 |
| g | Maximum digging distance of the parking surface | mm | 10703 |
| h | Min. swing radius | mm | 4512 |
| | Bucket digging force | kN | 249 |
| | Arm digging force | kN | 207 |



| Outline dimension | | | | | | | |
|-------------------|---------------------------------------|----|-------|---|-----------------------------|----|------|
| | Boom length | mm | 6500 | G | Track ground contact length | mm | 4160 |
| | Arm length | mm | 2800 | H | Track length | mm | 5112 |
| A | Total length | mm | 11397 | I | Track gauge | mm | 2740 |
| B | Total height | mm | 3628 | J | Track width | mm | 3340 |
| C | Total width | mm | 3350 | K | Track shoe width | mm | 600 |
| D | Counterweight height above the ground | mm | 1296 | L | Cab height | mm | 3319 |
| E | Min. height above the ground | mm | 550 | M | Hood height | mm | 2900 |
| F | Tail swing radius | mm | 3615 | N | Turntable width | mm | 3117 |

★ The above parameters may be changed due to product updating

